



CHATTERTON | REES



24 Lennox Gardens, London, SW1X 0DQ

Guide price £1,650,000





24 Lennox Gardens

London, SW1X 0DQ

- Two Bedrooms
- Top Floor with Direct Lift
- Long leasehold
- Two Bathrooms
- Communal Gardens
- Excellent Communals

An excellent top-floor, two-bedroom apartment (with direct lift access) set within a handsome red-brick building on the ever-popular Lennox Gardens. The flat is just shy of 900 sq ft and offers a superb layout.

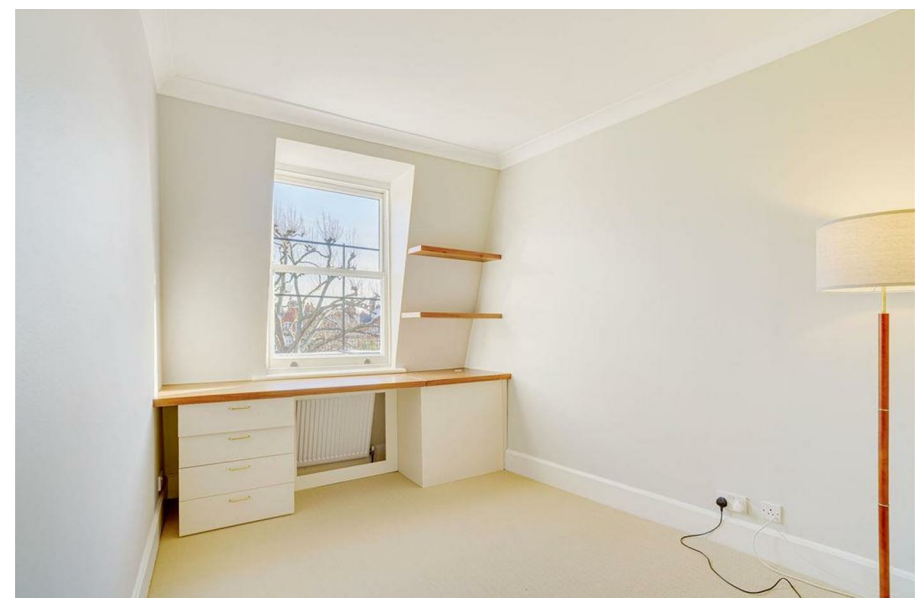
To the front, overlooking the communal gardens, is a generous reception room and a separate kitchen. There is a well-proportioned second bedroom with built-in wardrobes, and at the rear sits the principal suite, complete with a walk-in wardrobe and en-suite bathroom. A further guest WC/shower room completes the accommodation.

The communal areas have been refurbished in recent years, including a new intercom system. The property is sold on a long leasehold and benefits from eligibility to apply for access to the immaculate Lennox Gardens communal gardens. All of this while being only moments from Sloane Square, Knightsbridge, Harrods and South Kensington.

The apartment is in perfectly good condition throughout but would also appeal to a buyer looking to upgrade and add value.

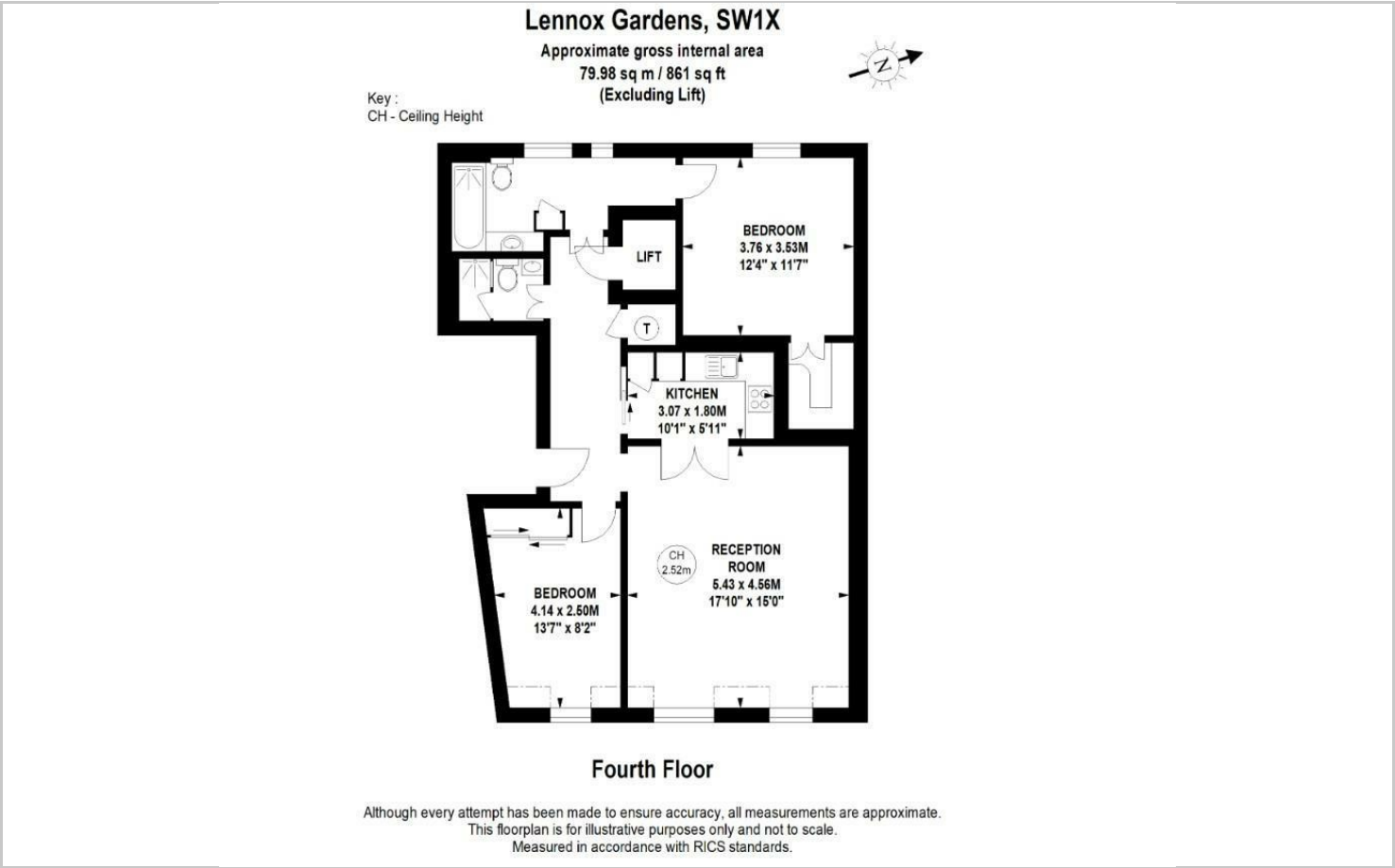
guide price £1,650,000







Floor Plans

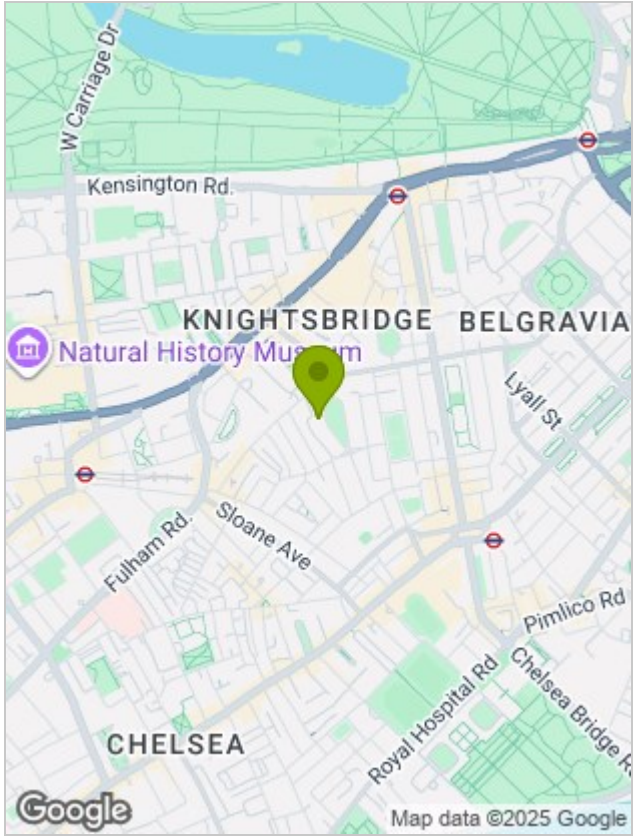


Viewing

Please contact our Chatterton Rees Office on 020 3780 0580
if you wish to arrange a viewing appointment for this property or require further information.

The particulars are set out as a general outline only for the guidance of intended purchasers or lessees, and do not constitute, any part of a contract. Nothing in these particulars shall be deemed to be a statement that the property is in good structural condition or otherwise nor that any of the services, appliances, equipment or facilities are in good working order. Purchasers should satisfy themselves of this prior to purchasing.

Location Map



Energy Performance Graph

